

# Container Castors







The three pillars of container transport:

# STABILITY. RELIABILITY. RESILIENCE.

Many industries face the challenge of moving containers efficiently, safely and flexibly. Choosing the right castors is crucial. Not only must they withstand extreme loads, but they must also meet the specific requirements of different applications:

**Stable support:** The container must rest securely on the castors with minimal play to ensure precise and reliable handling.

**Compact design:** The low mounting height of the castors makes it easy to manoeuvre through low hall doors or in confined spaces.

**High load capacity:** Despite the limited space, the castors must reliably support high loads.

**Secure locking:** To prevent uncontrolled rolling, the castors must securely lock the container when the brakes are engaged – even under heavy loads.

**Ergonomic design:** Despite their robust construction, castors should be designed to allow ergonomic and effortless assembly.

**These requirements demonstrate the importance of a well thought out design for the safe and efficient transport of containers.**

## THE CHALLENGE





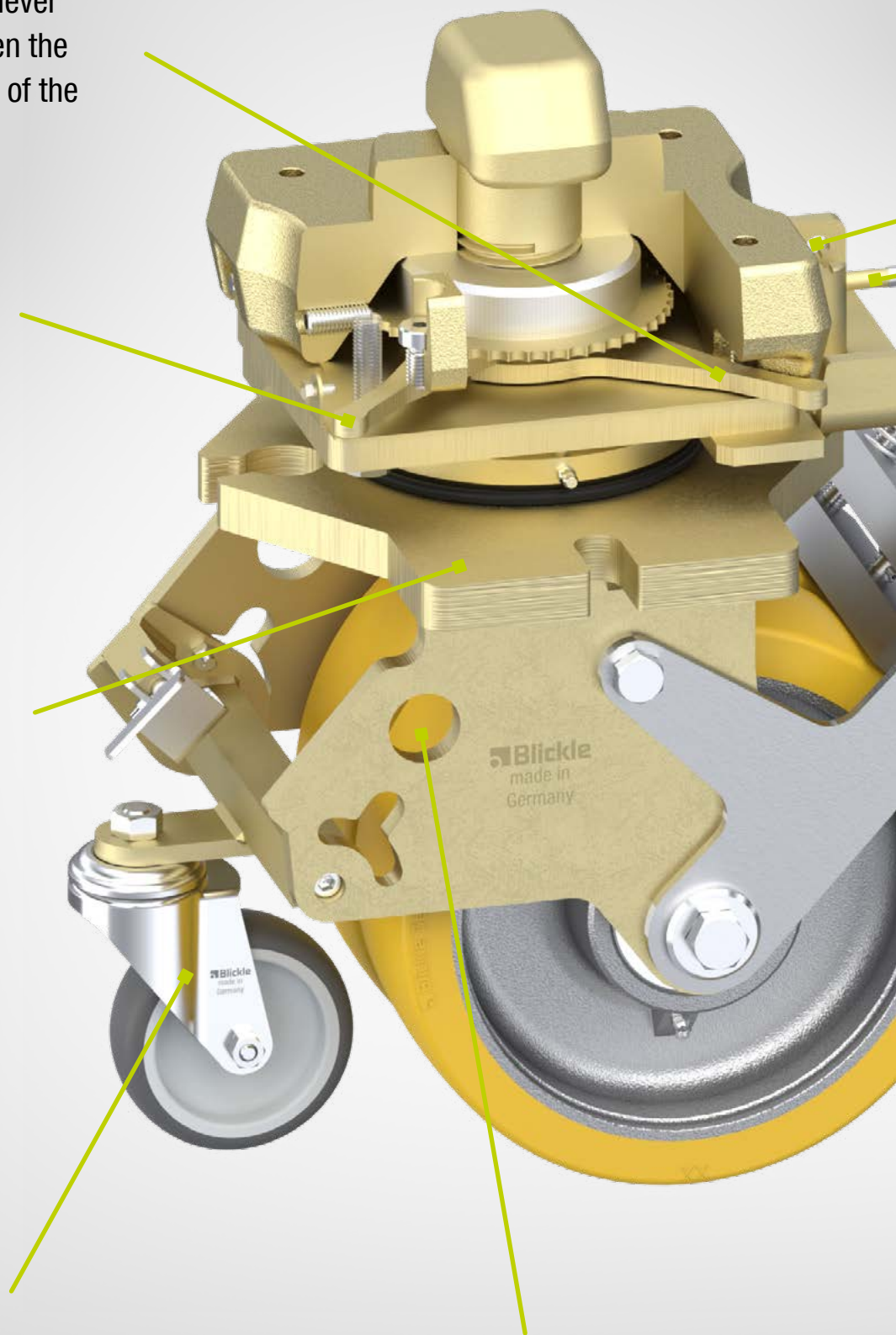
Additional adjustment lever  
minimises play between the  
castors and the corner of the  
container

Simple locking by  
turning a lever  
(Twistlock)

Easy to lift the castor  
with a forklift truck

Support castor for easy  
movement of the container  
castor

Through-hole for metal  
rod to make it easy to turn  
the castor on the spot



Steering bar connection

4-position  
directional lock

High retaining force  
due to wheel brake  
operated by hand

## At a glance



For containers with a total weight of up to 16,000 kg



Suitable for ISO 1161 container corners

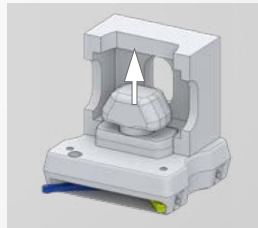


Fast, tool-free and reduced-play locking

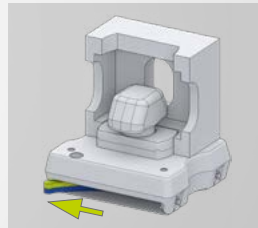


Robust welded steel construction

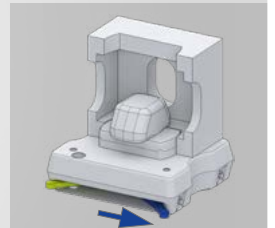
## Locking mechanism



Levers open; castor is inserted into the corner of the container



Close the locking lever



Operate adjustment lever to minimise play

Our answer to complex challenges:

# THE NEW CONTAINER CASTORS WITH TWISTLOCK

## LSC-GB series

**Welded steel heavy-duty container castors with Twistlock, heavy-duty swivel head, wheel with Blickle Besthane® polyurethane tread**

 4,000 kg / set \*

### Bracket: LSC series

#### Swivel bracket:

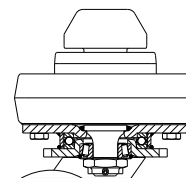
- particularly robust welded steel construction, zinc-plated, yellow-passivated, Cr6-free
- axial grooved ball bearing ISO 104 and tapered roller bearing ISO 355 in the swivel head
- bolted and secured welded central kingpin, extremely strong
- dust and splash-proof
- grease nipple
- with Twistlock, suitable for ISO 1161 container corners

### Wheel: GB series

- tread: high-quality polyurethane elastomer Blickle Besthane®, hardness 92 Shore A, colour brown, non-marking, non-staining
- wheel centre: rugged grey cast iron, with grease nipple, lacquered, colour silver



 **Blickle Besthane®**



Swivel castors	Swivel castor with "stop-top" brake	Wheel Ø [mm]	Wheel width [mm]	Dynamic load capacity [kg]	Static load capacity [kg]	Load capacity set (4 castors) * [kg]	Load capacity set (4 castors) ** [kg]	Bearing type	Mounting height [mm]	Mounting type	Offset [mm]
<b>LSC-GB 150x80K-RI4</b>	<b>LSC-GB 150x80K-ST-RI4</b>	150	80	1,200	2,160	4,000	2,500	ball bearing	267	Twistlock	65

\* Smooth and even industrial floor

\*\* Outdoor area


## Versions / options



	Steering bar	Special solutions
<b>Product code suffix</b>	<b>LSDC-STEERING BAR</b>	
Available for	all	upon request

## LSDC-GTH series

**Welded steel heavy-duty twin wheel container castors with Twistlock, heavy-duty swivel head, wheel with Blickle Extrathane® polyurethane tread**

 8,000–16,000 kg / set \*

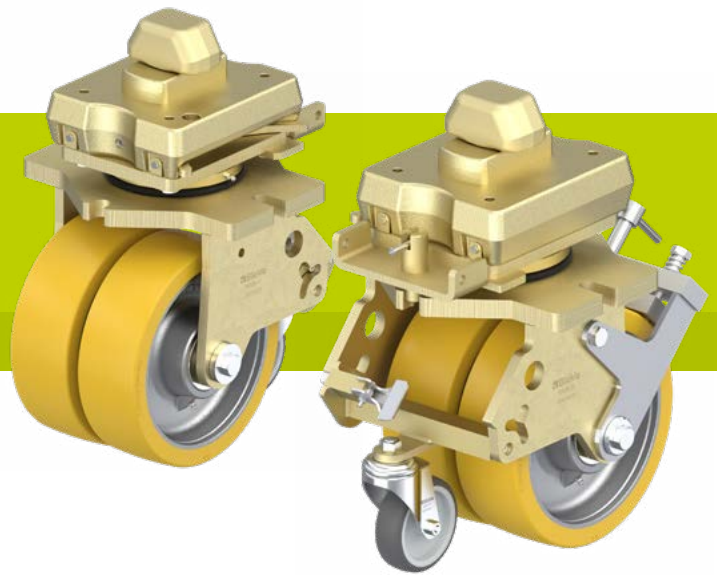
### Bracket: LSDC series

#### Swivel bracket:

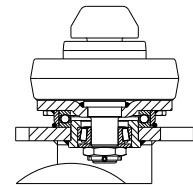
- particularly robust welded steel construction, zinc-plated, yellow-passivated, Cr6-free
- axial grooved ball bearing ISO 104 and tapered roller bearing ISO 355 in the swivel head
- bolted and secured welded central kingpin, extremely strong
- dust and splash-proof
- grease nipple
- with Twistlock, suitable for ISO 1161 container corners

### Wheel: GTH series

- tread: high-quality polyurethane elastomer Blickle Extrathane®, hardness 92 Shore A, colour yellow, non-marking, non-staining
- wheel centre: rugged grey cast iron, with grease nipple, lacquered, colour silver



 **Blickle Extrathane®**



Swivel castors	Swivel castor with "Radstop" wheel brake	Wheel Ø [mm]	Wheel width [mm]	Dynamic load capacity [kg]	Static load capacity [kg]	Load capacity set (4 castors) * [kg]	Load capacity set (4 castors) ** [kg]	Bearing type	Mounting height [mm]	Mounting type	Offset [mm]
LSDC-GTH 250x60K-RI4-SU	LSDC-GTH 250x60K-RAH-RI4-SU	250	2 x 60	2,700	4,860	8,000	5,500	ball bearing	405	Twistlock	50
LSDC-GTH 250x80K-RI4-SU-02	LSDC-GTH 250x80K-RAH-RI4-SU-02	250	2 x 80	3,700	6,660	12,000	7,500	ball bearing	405	Twistlock	50
LSDC-GTH 250x90K-RI4-SU-01	LSDC-GTH 250x90K-RAH-RI4-SU-01	250	2 x 90	5,000	9,000	14,000	8,500	ball bearing	405	Twistlock	50
LSDC-GTH 250x90K-RI4-SU-02	LSDC-GTH 250x90K-RAH-RI4-SU-02	250	2 x 90	5,000	9,000	16,000	10,000	ball bearing	435	Twistlock	50

\* Smooth and even industrial floor

\*\* Outdoor area

## Versions / options



	Steering bar	Special solutions
Product code suffix	LSDC-STEERING BAR	
Available for	all	upon request



THE BLICKLE  
HEAVY-DUTY RANGE

# OUR WORLD OF HEAVY-DUTY





Our wide range of over 30,000 standard products provides the perfect solution for almost any situation. All of our products are high-quality, maintenance-free, available quickly and have a long service life, as you would expect from Blicke.

There are also unique solutions in the field of heavy-duty that set new standards in the field of performance, durability and precision. With us you will definitely find something suitable for your requirements. If you can't find it in our extensive standard range, we can work together to develop a tailored product for you: Customising is one of our strengths.

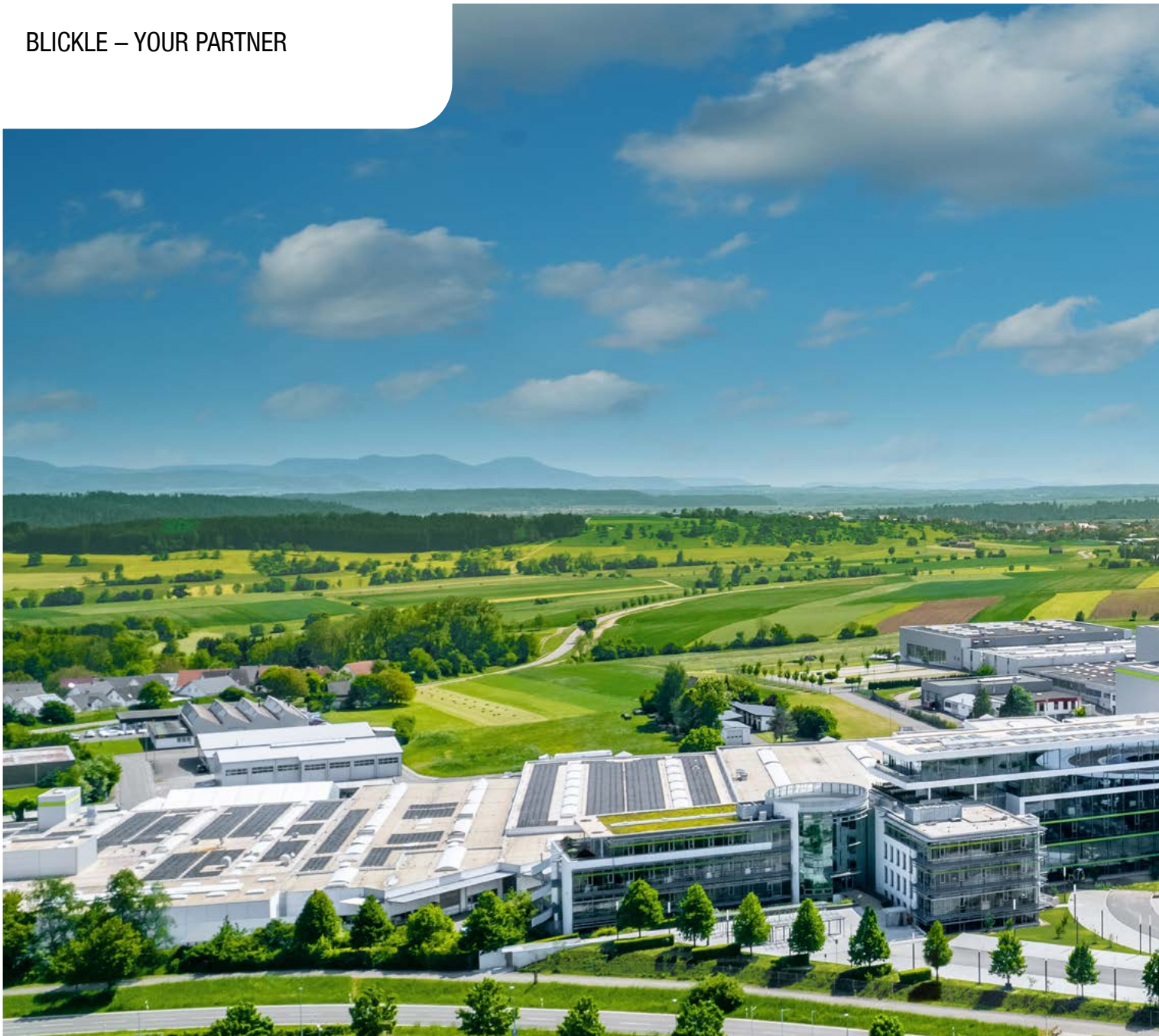
**Because our mission is customer satisfaction.**



Want to know more?  
Simply scan the QR code and  
immerse yourself in the Blicke  
world of innovations.







**Expertise. Innovation. Experience.**

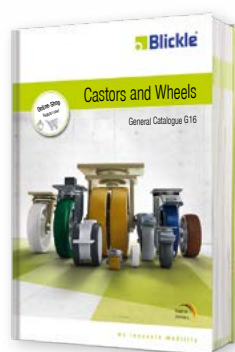
**BLICKLE GETS  
THE WORLD  
MOVING.**



Founded in 1953, today we are the leading manufacturer of wheels and castors worldwide. Blickle is committed to outstanding quality, high availability, delivery performance and reliability. We operate internationally and are renowned for our top-quality, durable and maintenance-free wheels and castors “Made in Germany”.



We are proud of our roots: our headquarters in Rosenfeld, Germany is and remains the heart of the company. As a family company, we value consistency – Dr. Sarah Blickle-Fenner and David Blickle are the third generation of the family to be involved in the company.



The Blickle general catalogue G16 – more than 30,000 wheels and castors on over 600 pages.

## At a glance

[www.blickle.com](http://www.blickle.com)



### CAD-Downloads

Download CAD files for free.



### Blickle Online Shop

Register with the Blickle Online Shop and place your order online.



### Product Finder

Find the right product for your requirements quickly and easily.



### G16 Online catalogue

Browse through our extensive G16 general catalogue.

